



**Carolina Naude**  
0826008440  
roma@romanaude.co.za



**Leandi Naude**  
0825614381  
leandinaude@gmail.com

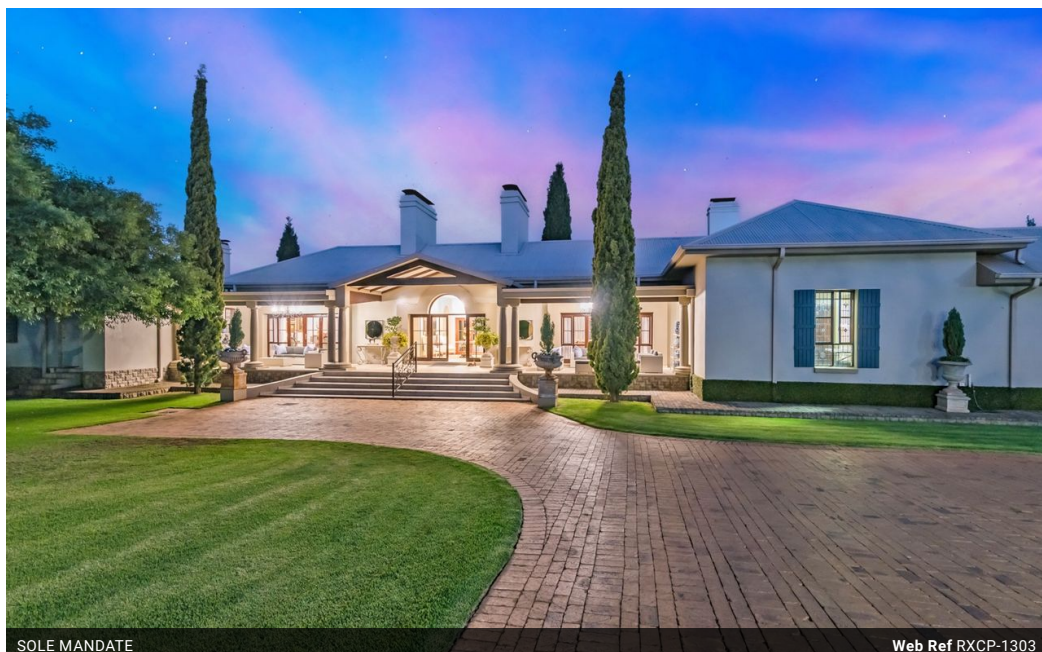


**Matthys Daniel Naude**  
082 712 4010  
naudemd@mweb.co.za

Contact RE/MAX-Property  
Merchants (Mooikloof)

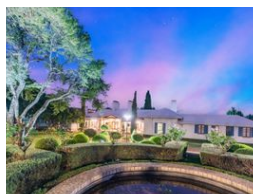
012 4801752

739 Blesbok street, Pretoria ,0002



SOLE MANDATE

Web Ref RXCP-1303



**R17,500,000**

5 5 8

**Monthly Bond Repayment** R177,665.07

Calculated over 20 years at 10.75% with no deposit.

**Transfer Costs** R1,930,984.00 **Bond Costs** R118,035.00

These calculations are only a guide. Please ask your conveyancer for exact calculations.

**Monthly Levy** R4,590 **Monthly Rates** R14,250

House For Sale in Mooikloof Equestrian Estate, Pretoria

**SOLE MANDATE- CONTACT LEANDI OR ROMA DIRECTLY.**

A magnificent masterpiece in the one and only Mooikloof Equestrian estate just come onto the market offering something unusual: a combination of a country feel with all of today's modern luxuries as well as the owner's fondness of French influences, lead to a result of sumptuous elegance, sophistication and grandeur. The spacious rooms decorated with the best interior and so much attention to detail put this home in a class of it's own. French vanities in the bathrooms

## Features

**Pets Allowed** Yes

### Interior

Bedrooms	5
Bathrooms	5
Kitchens	1
Recep. Rooms	2
Studies	1
Furnished	No

### Exterior

Garages	8
Security	Yes
Dom. Accom.	1
Pool	Yes
Views	Yes

### Sizes

Floor Size	1,500m <sup>2</sup>
Land Size	10,000m <sup>2</sup>

### Extras

Separate entertainment level, Wine cellar, Pizza oven